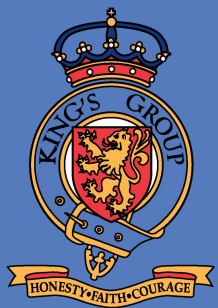




Welcome to  
King's Academy Brune Park

Year 7 Welcome Evening  
2025

Information Pack



King's Academy  
Brune Park

# Safeguarding

At Brune Park we understand that it is our collective and moral accountability to provide the best quality learning for all – so everyone in the school community makes progress, achieves their best and is happy and well.

Our school, therefore, recognises its prime responsibility to safeguard and promote the welfare of all learners.

If you have a safeguarding concern or something you would like to discuss please contact a member of the safeguarding team.

If your child has an issue or a concern please encourage them to speak to their tutor, year team (HOY or DHOY) or any member of the Safeguarding Team.



K.Payne  
Headteacher



S.Stannard  
AHT & DSL



F.Longden-Thurgood  
DHT & DSL



L.Tanner  
Deputy DSL



L.Edgar  
Deputy DSL

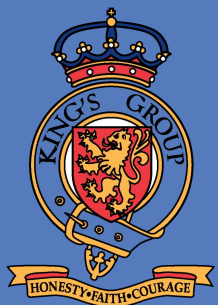


C.Percival  
Deputy DSL



S.Rawlinson  
Deputy DSL

HONESTY • FAITH • COURAGE



King's Academy  
Brune Park

# Inclusion

At King's Academy Brune Park, we pride ourselves on being an inclusive and supportive environment for all pupils. We have a wide range of resources available across the school to support our learners identified as vulnerable or with Special Educational Needs & Disabilities (SEND).

In line with the SEND Code of Practise 2014, we use a range of assessment and diagnostic tools to identify any possible barriers to learning and SEND needs a student may be experiencing. Children identified as having SEND needs are added to our SEND register and will have a comprehensive Learning Plan in place. Teachers use the Learning Plan to inform them of specific strategies and adaptations they can put in place in their lessons to support students in overcoming their barriers to learning.

We have a team of support staff who work with identified learners either in class or small group interventions. We provide a wide range of interventions to support a variety of needs across the 4 main areas of need: Cognition and Learning, Communication and Interaction, Social, Emotional and Mental Health and Physical and Sensory. We also have a qualified ELSA Practitioner and Trauma Informed Practitioner.

The Inclusion Leaders work closely with Year Teams and other colleagues to ensure a holistic approach is applied to identifying students additional needs and putting appropriate strategies and adjustments in place to enable learners to reach their full potential at King's Academy Brune Park.



**Mr O'Toole**  
SENCO



**Miss Kent**  
SENCO



**Mrs Rawlinson**  
Senior Mental  
Health Lead &  
DDSL

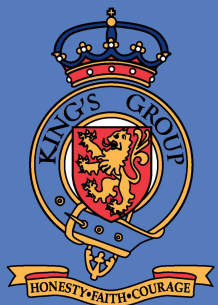


**Mr Mills**  
Inclusion  
Operational  
Manager



**Mrs Mitchell**  
Children and  
Families Team &  
Alternative  
Pathways





King's Academy  
Brune Park

# Library & Reading



**King's Academy Brune Park Library Team:**

**Mrs Hawksworth** – Librarian  
**Miss Bromyard** – Senior Library Assistant  
**Miss Sisk** – Senior Library Assistant  
**Miss Bourke** – Library Assistant

**Keep up to date** with the library through our **Social Media** platforms –  
@BruneParkLRC and via the **Virtual Library** –  
<https://sites.google.com/kgahampshire.uk/virtuallibrary>



Reading is a key skill that underpins success at every stage of a student's journey—from the classroom to the wider world. At King's Academy Brune Park, we are committed to helping all pupils read widely, regularly, and with confidence. Our goal is to develop fluent readers who are not only capable but also curious—ready to tackle challenging texts that enrich their understanding and broaden their view of the world.

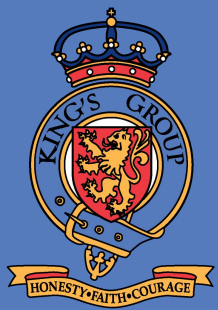
Our library is central to this mission. It **champions reading for pleasure**, offers a wide range of learning resources, and works closely with staff and students through targeted reading support and interventions. Throughout the year, we host a variety of events, including author visits, World Book Day celebrations, and themed reading weeks to keep students engaged and inspired.

Every four weeks, pupils take part in **structured library lessons**. These sessions give students the chance to explore new genres, discover different authors, and spend time reading both independently and with peers. This regular exposure encourages a love of reading and helps strengthen our whole-school reading culture. We believe that reading widely supports both academic growth and emotional wellbeing.

To guide and motivate our students, we've developed the **King's Academy Brune Park Reading Canon**—a curated list of diverse, inclusive, and age-appropriate books for each year group. These texts complement our curriculum and offer the right level of challenge to stretch our pupils.

For more information about our library and tips on how to support your child's reading journey, please visit our school website.





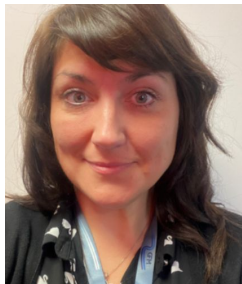
King's Academy  
Brune Park

# Gosport Community Hub

We are incredibly lucky on our site to have the Gosport Community Hub right on the doorstep!

The team at the Hub will be working together with other community organisations, to host events, workshops and groups to support Gosport residents.

Located on-site at King's Academy Brune Park, the Hub is a space that reflects and responds to the needs of the community. Our vision is to listen, connect and empower individuals and families to strive and achieve a better and more sustainable future. We look forward to welcoming you!



Weekend, Evening and Holiday Events

Weekly parent / carer drop in groups

Youth Ambassadors Local School Cluster meetings

School Transitions project

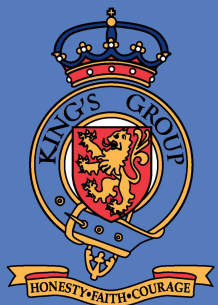
Effective signposting

Family Support / Parent Carer Courses

Child Support through group or 1-2-1 intervention







King's Academy  
Brune Park

# Young Carers

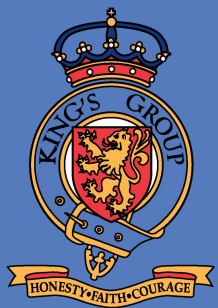
At King's Academy Brune Park we are aware that some of our students are Young Carers – students who are 16 and under – who are caring for a family member who has a long term illness or disability, mental health problems or possibly an addiction to drugs or alcohol. They might care for a parent, brother or sister or perhaps a grandparent.

Young Carers are a vulnerable and disadvantaged group who frequently experience difficulties in their education as a result of their caring role.

Mrs Price is the operational lead for our Young Carers and supports our students in school.

Young Carers are able to access support through a variety of offers. On Tuesdays, Wednesdays and Thursdays Mrs Price is available from 8am until tutor time for more individual support. There is also a 'Listening Ear' provision on these days during lunchtime where students are able to come to talk or relax whilst eating their lunch. Each week Young Carers are able to access a google classroom for information regarding the session for the week. The Young Carers session after school on a Thursday sees a varied offer of activities including Art, Cooking, Music and PE games.





King's Academy  
Brune Park

# Medical & Welfare

At King's Academy Brune Park we strive to ensure that all of our students are safe and well at all times. Miss Harman is our student welfare officer and supports our pupils with medical needs, including working with guardians and medical professionals in the child's life to create individualised and carefully tailored Individual Health Care Plans for such children (IHCP).

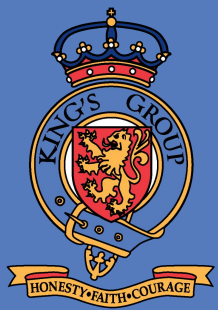
The welfare room is based Next to the Dance Studio in the Dance Quad and is a place where pupils can access support needed for general first aid or more specific support with medical needs.

Miss Harman always strives to provide the best care for all of our pupils and is keen to support and promote the welfare of all students.



HONESTY • FAITH • COURAGE





King's Academy  
Brune Park

# Breakfast Club

**King's Academy Brune Park is proud to offer a free breakfast club for all of our students.**

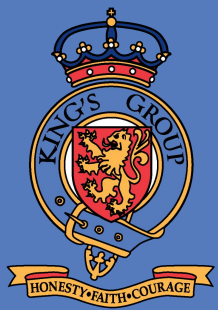
Breakfast club is entering its fourth year, run by Miss Halsey and offers an opportunity for students to access a safe space as well as get breakfast each day. Options include bagels and cereal as a great way to start the day.

Not only does the club provide nutrition for the tummy, but also for student wellbeing... Miss Halsey has seen breakfast club help build countless friendships between students as well as give children an adult to speak to each morning.

**Breakfast club is open from  
7:45 – 8:15 every day  
with a wide variety of delicious  
offerings to start the day  
(and suitable alternatives for children with  
dairy or gluten allergies).**







King's Academy  
Brune Park

# Attendance

Mrs Dorey - Attendance Manager

Miss Bright - Looks over Years 8 and 10

Mrs Hancock - Looks over Year 7, 9 & 11

Mrs Ware - Is our Attendance Support Officer

You can find us above reception and are welcome to pop up to see us anytime.

Attending school regularly is crucial for your child's academic success and overall development. A high attendance percentage indicates consistent learning and engagement, which are vital for their progress. The attendance team is available to support both students and families, offering resources and assistance to address any attendance-related issues. For advice or questions regarding attendance, do not hesitate to reach out to the team for guidance and support.



Attendance during one school year	Equates to days absent	Which is approximately..	Which means the number of lessons missed...
94%	10 days	2 weeks	50 lessons
90%	19 days	4 weeks	100 lessons
85%	29 days	6 weeks	150 lessons
80%	38 days	8 weeks	200 lessons
75%	48 days	10 weeks	250 lessons
70%	57 days	11.5 weeks	285 lessons
65%	67 days	13.5 weeks	335 lessons



King's Academy  
Brune Park

# Trips and Visits

## Learning Beyond the Classroom

At King's Academy Brune Park, pupils are presented with numerous opportunities throughout their academic journey, including trips near and far to support their curriculum, learning and development. Our inclusive and varied trips are designed to be enjoyable and accessible for all students, enriching their educational experience and fostering a sense of adventure and community. Trips and Visits ensure that your child benefits from these exciting and memorable experiences.

All trip communication is electronic so make sure the school has a current email address for you. Some trips have limited numbers and if oversubscribed, places will be allocated randomly so it is important that we can get in touch..

**NEW FOREST**  
ACTIVITIES

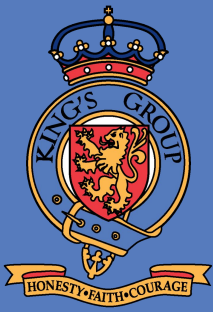


*Year 7 Summer Term  
Residential*

**EVOLVE**

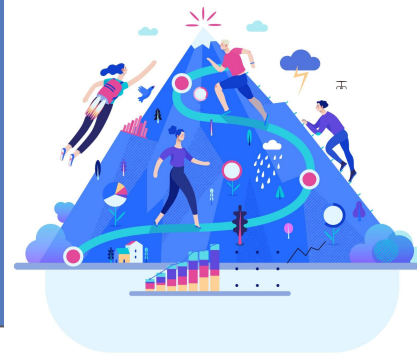


*Year 7 Autumn Term  
Panto*



King's Academy  
Brune Park

# Careers



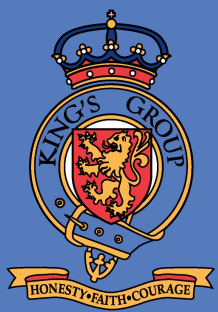
Miss Bailey is our School's Career Lead

With 99% of our current Year 11's  
having a post 16 destination

- Working with students individually or through tutor time to raise aspirations and achieve those goals
- To provide impartial student specific career advice for life in further education or apprenticeships
- Connected with local employers, college and training providers
- To enable students to make an informed decision about their future
- Linking the curriculum to careers in the world of work.
- Supporting students through Work Experience and Post 16 destinations
- Organising events with local employers, college and training providers to help students understand the world of work.







King's Academy  
Brune Park

# Home School Link Worker

A message from Miss Ringland:-

As a home school link worker, I can offer support for all needs within the area between home and school. I will identify families and students who need their attendance improving, looking into ways that support the family or student in a holistic way. Once I have identified those needs I will be able to see the student regularly (depending on each child) either daily or weekly.

Please see below for some examples of ways I can support:

- Home visits/ meet the family,
- Share information around access to programmes or relative courses,
- Referrals within school or outside school e.g medical, interventions or CAMHS ,
- Point of contact for parents/carers and/or other professionals,
- Make arrangements for suitable provisions,
- Improve a student's engagement within school,
- Identify areas of need,
- Promote positive well being,
- Daily check-ins with teachers to promote positive communication between school and home,
- Offer a safe space for students to share difficulties, troubles or worries,
- Signpost to relevant professionals (including assisting parents),
- To work collaboratively between the school and home to achieve shared objectives,
- Inform parents or students of any relevant updates,
- Students to feel all-round success within school,
- And finally to be a friendly face when someone is in need.





King's Academy  
Brune Park

# Chromebooks for Learning

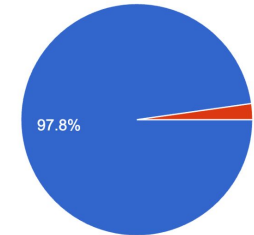
This year, we asked Year 6 parents if there was interest in continuing the Chromebook scheme, and the response was overwhelming. Out of 269 parents, a remarkable response, 97.8% indicated they would like us to offer this opportunity again. Your support and enthusiasm have been incredibly encouraging.

## Why Chromebook?

- Designed for education
  - Robust for everyday use
  - 10 hour battery life
  - High quality components
- Modes
  - Touch screen tablet
  - Touch screen laptop
  - Presentation and tent modes for comfortable viewing
- 8 seconds to boot up
- All classes are automatically set up on Google Classroom
- No software to install or update
- Upgrades this year were offered in the survey and the majority of parent asked us to include:
  - Asus CZII04FM2A-NS0019
  - 8GB RAM rather than 4GB - *this will allow your child to open more programs at the same time*
  - Stylus - *this will help with art and fine details*



Register of interest  
269 responses



## Parent/Carer Handbook

<https://tinyurl.com/KGAChromebookHandbook>





We look forward to  
welcoming you in  
September